

TRAVELREPORT

JAPAN IN SUMMER

20 MAI TO 06 JUNE 2007



Max Berlijn
Wilhelminastraat 9
6285 AS Epen (LB) Nederland
max.berlijn@nn.nl

ITENERARY

- Sun 20-05. Flight from London Heathrow to Tokyo
Mon 21-05. Birded all day (without sleep) at Tokyo Bay and the reed beds around Omyjawa Gowa.
Thue 22-05. Birded at Inbanuma Marsh, after this travelled by bullittrain from Tokyo to Karuizawa and birded in the evening.
Wed 23-05. In the morning birded around Karuizawa. In the afternoon Toden Lake and Chikume River.
Thur 24-05. Karuizawa in the morning after that birded at the Diamond Dam and drove to Mount Fugi with birding there in the afternoon because of upcoming bad weather.
Fri 25-05. All day inside the hotel in Gotemba (heavy rain), in the afternoon drove to Tokyo and birded at Jutsiu (observation centre) and boarded on the ferry to Hachijo-Jima in the late evening.
Sat 26-05. Birded from the ferry until arrival on 10.00 am. After arrival on Hachijo-Jima, birded all day on the island.
Sun 27-05. In the morning birded at Hachijo-Jima and around 10.00 a.m. took the day ferry back to Tokyo and birded from the boat.
Mon 28-05. Flown from Tokyo to Kagoshima and drove to Miike and birded in the evening.
Thue 29-05. Birded at Miike all day.
Wed 30-05. In the morning birded at Miike and later that day flown from Kagoshima to Amami and birded in the beginning of the night at Ichi-Baru.
Thu 31-05. Birded at Amami all day, first at Sumiyo Dam, after that Amami Natural Forrest and later at Kinsakubaru.
Fri 01-06. Birded at Amami in the morning, after that in three flights to the island of Ishigaki-Jima and birded in the evening
Sat 02-06. Birded all day at Ishigaki-Jima at the southern half of the island .
Sun 03-06. In the morning birded at Ishigaki-Jima and later on flew to Okinawa and drove to Hentona in the northern half of the island and birded around the village of Ada.
Mon 04-06. All day birded at Okinawa at Jamburu forrest and the rice fields Hentona.
Thue 05-06. In the morning at Jamburu forrest at Okinawa, later on drove south birded along the way (Kin and Nana). Flew to Tokyo in the evening.
Wed 06-06. Flew from Tokyo to London and later on to Brussels and drove home.

Legenda:

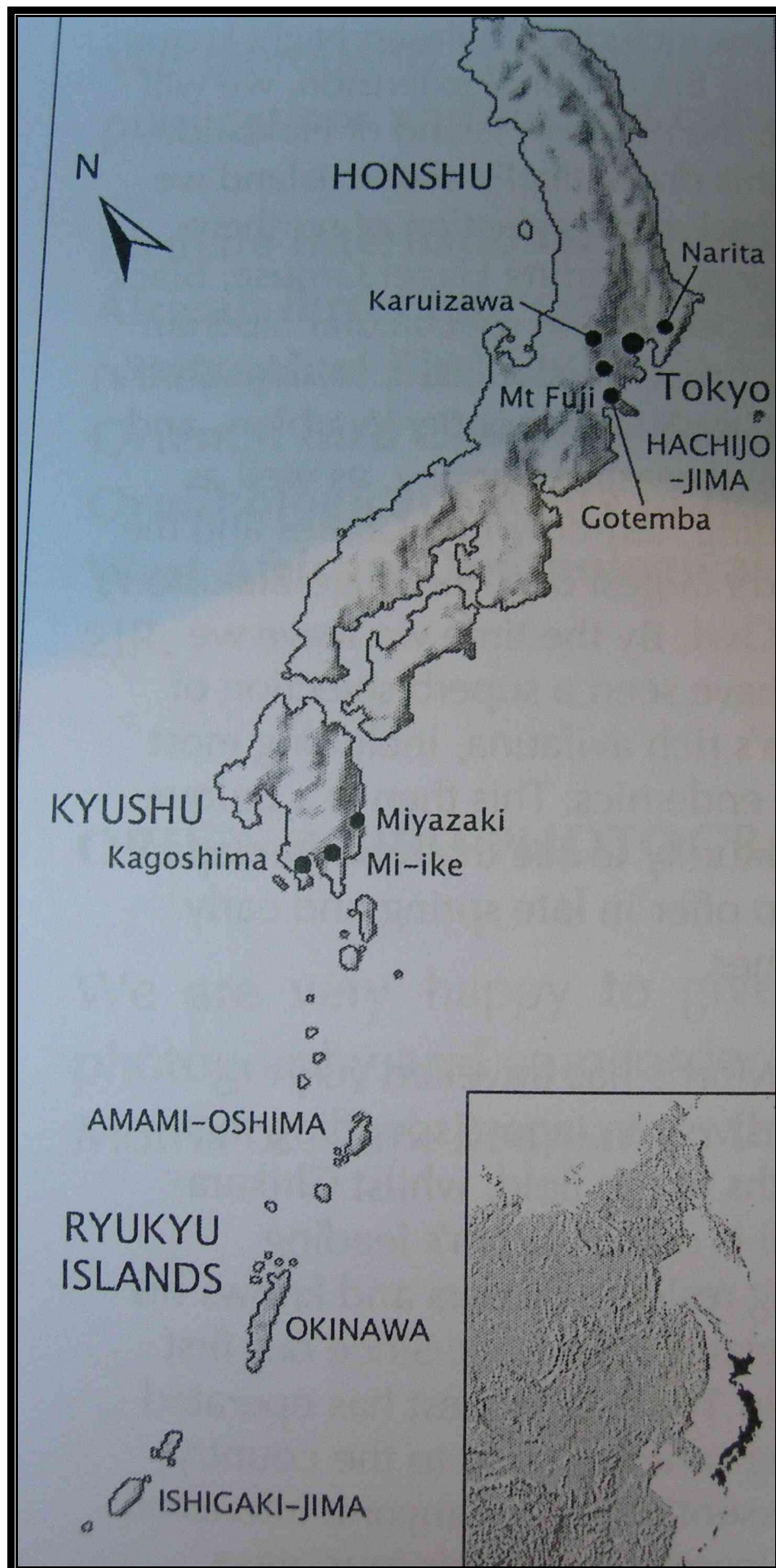
*AAAA = New (Holarctic) Species (23)

AAAA = Good bird for the area or for myself

The Dutch name is given when known (according to van den Berg, Dutch Birding-namen). The list order is conform Palaearctic Birds by Beaman with the recent changes on the splitting and lumping issue. Subspecies is only mentioned when thought to be important and really visible in the field.

Only new bird species SEEN mentioned.

The weather was good with two rainy days of which one was almost unbirdable. On the southern islands the temperature was high (35 C) and humid but the rest of the trip was nice with temperatures between 20 and 25 C. The weather during the “pelagic” was pleasant with not too much wind but quite a bit of swell.



THE BIRDSPECIES

001 LITTLE GREBE – *tachybaptus ruficollis*

(dodaars)

A total of 9 birds seen spread over several days birding on mainland water sites.

002 GREAT CRESTED GREBE - *podiceps cristatus*

(fuut)

22-05 2 ex. seen on Inbanuma marsh.

003 BLACK-FOOTED ALBATROSS – *diomedea nigripes*

27-05 1 ex. flying in front of the boat and close by while looking backwards, flying north. Very nice views.

004 BUWLER'S PETREL – *bulweria bulwerii*

(buwlers stormvogel)

27-05 5 ex., some seen quite good from the ferry. With the long neck and light carpal band on the upperwing, quite big with shearwater like flight pattern.

005 STREAKED SHEARWATER – *calonectris leucomelas

26-05 very common from the ferry in huge flocks.

27-05 very common from the ferry also close views.

A Cory's like shearwater, with an open face and streaks on the head.

006 FLESH-FOOTED SHEARWATER – *puffinus carneipes

27-05 1 ex. seen quite well from the ferry flying away. A big bulky all dark storm petrel with light lines on the upperparts and belly and no light underwing pattern like sooty and short-tailed. The bill was not seen.

007 SOOTY SHEARWATER – *puffinus griseus*

(grauwe pijlstormvogel)

27-05 1 ex. seen well and quite convincing from the ferry. A long bill and the typical underwing pattern.

008 SHORT-TAILED SHEARWATER – *puffinus tenuirostris*

26-05 5 ex. seen from the ferry.

27-05 10 ex. seen from the ferry, one bird was seen swimming close to the boat.

Short bill and high forehead.

009 TRISTRAM'S STORM-PETREL – *oceanodroma tristrami

26-05 1 ex. from the ferry.

27-05 2 ex. seen from the ferry.

Not really good views, far, all dark long tailed petrels flying low on the sea (different than Bowler's which flies like a shearwater). No details seen on the wings (the white patches of Matsudaira's should have been visible...)

010 BROWN BOOBY – *sula leucogaster*

27-05 1 adult from the ferry seen well flying past.

011 GREAT CORMORANT – *phalacrocorax carbo* ssp: *hanedae*

(aalscholver)

Common on the northern main islands of Japan, some at inland breeding colonies, looking very like sinensis.

012 YELLOW BITTERN – *ixobrychus sinensis*

22-05 20 ex. together in a small colony giving nice views, flying and calling in the Inbanuma marsh.

03-06 1 male in a rice field on Ishigaki-Jima.

013 CINNAMON BITTERN – *ixobrychus cinnamomeus*

03-05 1 male in a rice field at Ishigaki-Jima.

04-05 4 ex. in the rice fields near Hentona.

Nice views.

***014 MALAYAN NIGHT HERON – GORSACHIUS MELANOLOPHUS**

02-05 2 ex. at Ishigaki-Jima, one immature and one adult.

03-05 2 ex. at Ishigaki-Jima, both adult birds of which one was the same as the day before.

Very nice and close views, with buffish tips to the primaries in trees and walking on the ground. The juvenile was nice spotted.

015 BLACK-CROWNED NIGHT HERON – nycticorax nycticorax

(kwak)

Seen on several locations during the trip with the highest number (100+) on 23-05 in a small colony.

016 (EASTERN) CATTLE EGRET – bubulcus ibis ssp: coromandus

A total of 110 birds seen spread over the trip, becoming more numerous going south. Mostly in summer plumage but also a lot first (?) summers.

017 CHINESE POND HERON – ardeola bacchus

01-05 1 ex. flying on Ishigaki-Jima.

03-05 1 ex. in the rice fields on Ishigaki-Jima.

Both in summer plumage.

018 PACIFIC REEF EGRET – egretta eulophotes

A total of 28 birds seen on Ishigaki-Jima and Okinawa, both white and grey faces.

019 LITTLE EGRET – egretta garzetta

(kleine zilverreiger)

Almost daily seen in low numbers spread over the country with some days where it was common.

020 INTERMEDIATE EGRET – egretta intermedia

A total of 32 birds seen spread over the trip, mostly alone and also along the coast.

021 GREAT EGRET – ardea alba ssp: modesta

(grote zilverreiger)

A Total of 36 birds seen spread over the trip, some with red legs.

022 GREY HERON – ardea cinerea

(blauwe reiger)

Quite commonly seen spread over the trip.

023 PURPLE HERON – ardea purpurea

(purperreiger)

A total of 4 birds seen all on Ishigaki-Jima in the rice fields.

025 GREAT BITTERN – botaurus stellaris

(roerdomp)

21-05 1 ex. calling from the reeds.

22-05 2 ex flying and sitting in Inbanuma marsh.

026 BLACK-FACED SPOONBILL – platalea minor

05-05 1 immature with rings (right Long Yellow, left white and red) at a small pool near the airport of Okinawa.

Very good views, close, black in the wings and no yellow “teardrop”. Internet investigations looked as the bird was ringed at Okinawa, but no conformation about this despite the email.

027 MANDERIN DUCK – aix galericulata

(mandarijneend)

23-05 2 a pair at the Chikume River.

05-06 2 a pair at a river in the northern part of Okinawa.

028 EURASIAN WIGEON – anas penelope

(smient)

22-05 1 ex. at the Chikume River.

23-05. 1 ex. at Inbanuma marsh a first summer male.

029 FALCATED DUCK – anas falcata

(bronskopeend)

22-05 4 ex. one male and three females at Inbanuma marsh, in one flock.

030 MALLARD – anas platyrhynchos

(wilde eend)

28-05 5 ex. at Miike lake.

031 CHINESE SPOT-BILLED DUCK – anas zonorhyncha

The commonest duck seen on most of the places during the trip often in pairs.

032 TUFTED DUCK – aythya fuligula

(kuifeend)

21-05 1 male at a pond in Tokyo Bay..

033 GREATER SCAUP – aythya marila

(topper)

21-05 75 ex in one flock at Tokyo Bay.

25-05 1 female at Jutsiu.

034 GOOSANDER – mergus merganser

(grote zaagbek)

23-05 5 ex. at the Chikume River.

035 BLACK-EARED KITE – milvus (migrans) lineatus

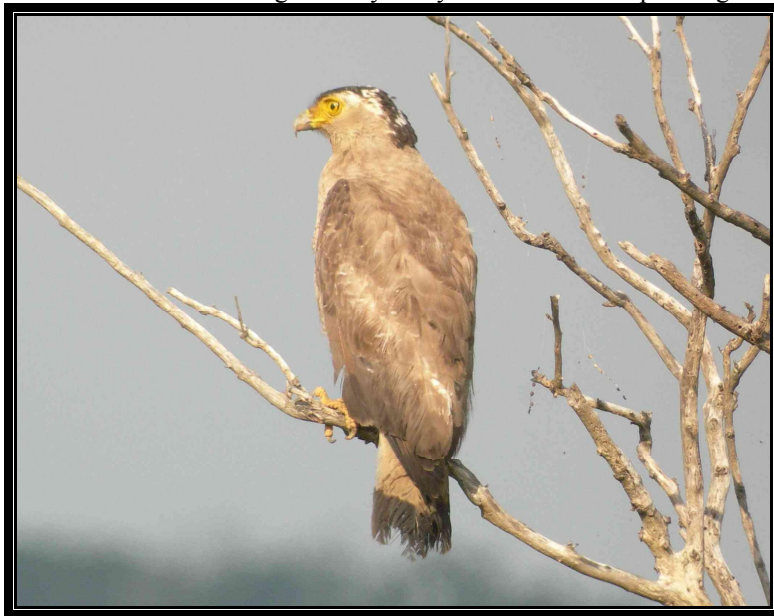
A quite common bird on the “mainland” of Japan with a maximum of 20 birds on a day (22-05).

***036 RYUKYU SERPENT EAGLE – SPILORNIS PERPLEXUS**

02-06 5 ex. on Ishigaki-Jima.

03-06 1 ex. on Ishigaki-Jima.

Nice views of some sitting close by. Very like “normal” serpent eagles.



037 EASTERN MARSH HARRIER – circus spilonotus

21-05 1 male flying over the reed beds around Omyjawa Gowa.

038 NORTHERN GOSHAWK – accipiter gentiles

(havik)

22-05 1 ex. flying near Karuizawa.

039 JAPANESE SPARROWHAWK – *accipiter gularis*

02-05 1 ex. singing female flying over and displaying to the tape at Ishigaki-Jima.

Good views of this small accipiter with barring and even a visible throat line. The “song” was the most striking feature.

040 GREY- FACED BUZZARD – *butastur indicus*

22-05 1 ex. seen from the train to Karuizawa.

29-05 1 ex. seen around Miike.

Both not very nice views, brief and distant.

041 JAPANESE BUZZARD – *buteo (buteo) japonicus*

22-05 4 birds seen spread over the day.

24-05 1 ex. seen at Karuizawa.

042 OSPREY – *pandion haliaetus*

(visarend)

A total of 3 birds seen during the trip.

---- CHINESE BAMBOO PARTRIDGE – *bambusicola thoracica*

27-05 1 ex. Seen well on the road in front of the car at Hachijo-Jima (exactly like in the books) . Seen better than anywhere where it is not introduced...

043 GREEN PHEASANT – *phasianus versicolor*

21-05 3 females at Tokyo Bay.

22-05 6 ex. also some very nice males around Inbanuma Marsh.

Nice close views.

044 BARRED BUTTONQUAIL – *turnix suscitator*

05-05 1 ex. flushed and seen well in flight at an old rice field at Okinawa.

No black on the underparts. Buff flanks seen well and also dark and white lines on the back.

045 OKINAWA RAIL – *GALLIRALLUS OKINAWAE

03-06 8 ex. seen during the day time on the road and in fields near Ada. One was an immature.

04-06 3 birds and five chicks during the daytime on the road and in the fields around Ada.

Very nice views of birds fighting and leisurely feeding. The chicks were crossing the road with one of the adults, like black bobs. The call (screams) were heard a few times.



Foto:Alain Perthuis

***046 RUDDY-BREASTED CRAKE – PORZANA FUSCA**

01-06 3 ex. heard in a big swamp at Ishigaki-Jima.

02-06 2 heard in the same swamp at Ishigaki-Jima.

04-06 1 ex seen and heard very well while crossing a dyke for about 20 times responding to the tape (even walking behind Pete who chanced position of the tape...). Nice rail, slightly bigger than a Little Crake, nicely rufous from beneath.

047 WHITE-BREASTED WATERHEN – *amaurornis phoenicurus*

A total of 17 seen on Ishigaki-Jima, also in dry area's.

048 COMMON MOORHEN – *gallinule chloropus*

Quite commonly seen on most day's of the trip.

049 EURASIAN COOT – *fulica atra*

(meerkoet)

23-05 2 ex. at Toden lake.

050 BLACK-WINGED STILT – *himantopus himantopus*

(steltekluut)

A total of 22 seen during the trip at various suitable sites.

051 ORIENTAL PRATINCOLE – *clareola maldivarum*

(oosterse vorkstaartplevier)

30-05 3 ex. on the airfield of Amami, in flight.

052 LONG-BILLED PLOVER – *charadrius placidus*

23-05 5 ex. in the Chikume River of which two recently fledged juveniles, with nice white lined feathers on the upperparts. Confusion with the juveniles with 053 is very likely. Long bill and legs are always a good "beginning point".

053 KENTISH PLOVER – *charadrius alexandrinus*

(strandplevier)

21-05 1 ex. on the mud fields of Tokyo Bay.

02-06 15 ex. at Ishigaki-Jima.

054 MONGOLIAN PLOVER – *charadrius mongolus*

21-05 10 ex. in small flocks on the mud fields of Tokyo Bay.

02-06 12 ex. at Ishigaki-Jima mud fields.

The birds in June where all not in breeding plumage, so likely first winters?

055 GREATER SANDPLOVER – *charadrius leschenaultii* ssp: *crassirostris*

(woestijnplevier)

21-05 1 ex. in partly winter plumage at Tokyo Bay.

02-06 1 ex. at Ishigaki-Jima mud fields, also not in breeding plumage.

056 PACIFIC GOLDEN PLOVER – *pluvialis fulva*

(aziatische goudplevier)

21-05 1 adult summer in a rice field near Omyjawa Gowa.

26-05 11 ex. in one flock on a grass field at Hachijo-Jima.. Many winter plumage birds.

02-06 2 ex. in winter plumage at a mud field at Ishigaki-Jima.

057 GREY PLOVER – *pluvialis squatarola*

(silverplevier)

01-06 1 ex. at Ishigaki-Jima.

058 SANDERLING – *calidris alba*

(drieteenstrandloper)

21-05 30 ex. in summer plumage at Tokyo Bay.

059 RED-NECKED STINT – *calidris ruficollis*

(roodkeelstrandloper)

21-05 4 ex. in summer plumage at Tokyo Bay.

25-05 1 ex. in summer plumage at Jutsiu.

02-06 2 ex. in “pre” breeding plumage at a mud filed at Ishigaki-Jima.

060 SHARP-TAILED SANDPIPER – *calidris acuminata*

(siberische strandloper)

21-05 1 ex. in summer plumage in a rice field near Omyjawa Gowa.

02-05 2 ex. in first? summer plumage at a mud filed at Ishigaki-Jima.

All birds where not “the real thing” in there breeding plumage.

061 DUNLIN – *calidris alpine* ssp: *sakhalina* or *pacifica*

(bonte strandloper)

21-05 200 ex. at Tokyo Bay.

25-05 10 ex. at Jutsiu.

062 COMMON SNIPE – *gallinago gallinago*

(watersnip)

21-05 4 ex. the reed beds around Omyjawa Gowa.

26-05 1 ex. on Hachijo-Jima.

063 LATHAM’S SNIPE – *gallinago hardwickii*

22-05 10 ex in a rice field spot near Karuizawa.

Nice display flights but also seen on the ground in the rice fields.

064 AMAMI WOODCOCK – *scolopax mira

30-05 1 ex. seen extremely well next to the bus on a dirt track in the north of Amami.

Strange woodcock with long legs (often not pictured in the books), heavy bill mainly at the base, dark plumage and pink naked skin mainly behind the eye.

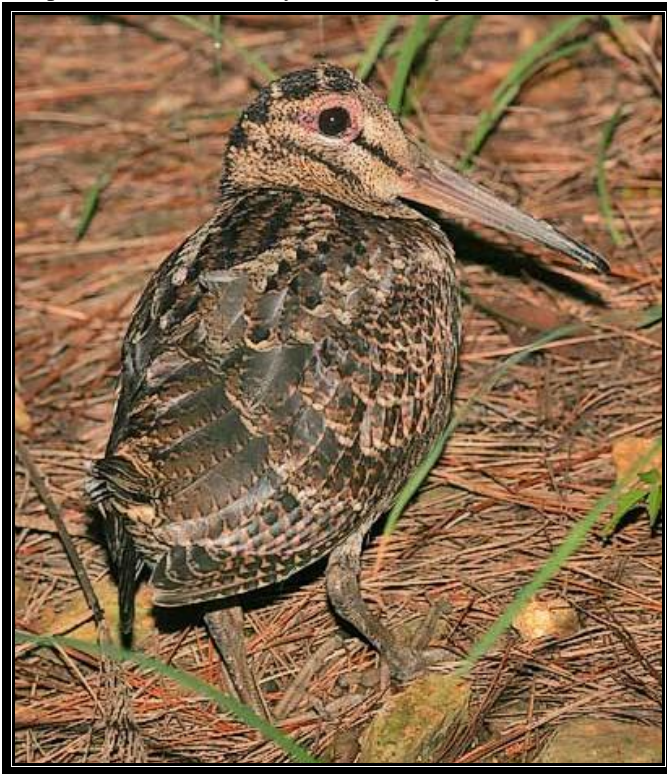


foto: Pete Morris

065 BLACK-TAILED GODWIT – *limosa limosa* ssp *melanuroides*

(grutto)

21-05 10 ex. near Omyjawa Gowa.

066 BAR-TAILED GODWIT – limosa lapponica ssp: baueri

(rosse grutto)

25-05 5 ex. at Jutsiu.

067 EURASIAN WHIMBREL – numenius phaeopus ssp: variegatus

(regenwulp)

21-05 100 ex. at Tokyo Bay.

02-06 1 ex. at Ishigaki-Jima.

068 MARSH SANDPIPER – tringa stagnatilis

(poelruiter)

02-05 1 summer plumage bird on a mud field at Ishigaki-Jima.

069 GREEN SANDPIPER – tringa ochropus

(witgat)

23-05 1 ex. at the Chikume River.

070 WOOD SANDPIPER – tringa glareola

(bosruiter)

21-05 2 ex. in a rice field near Omyjawa Gowa.

071 TEREK SANDPIPER – xenus cinereus

(terekruiter)

21-05 8 ex. in a rice field near Omyjawa Gowa.

072 COMMON SANDPIPER – actitis hypoleucos

(oeverloper)

21-05 1 ex. at Tokyo Bay.

073 GREY-TAILED TATTLER – heteroscelus brevipes

A total of 125 seen on the trip and the most common wader, with up to 60 birds (21-05) a day. Close views.

074 RUDDY TURNSTONE – arenaria interpres

(steenloper)

A total of 82 birds seen on the trip on several locations.

075 RED-NECKED PHALAROPE – phalaropus lobatus

(grauwe franjepoot)

26-05 4 seen on the ferry crossing to Hachijo-Jima.

27-05 30 seen on the ferry crossing in nice flocks in summer plumage.

076 POMARINE JAEGER – stercorarius pomarinus

(middelste jager)

27-05 1 ex. from the ferry from Hachijo-Jima.

077 BLACK-HEADED GULL – larus ridibundus

(kokmeeuw)

21-05 100 ex. at Tokyo Bay.

078 BLACK-TAILED GULL – larus crassirostris

26-05 20 ex. on the crossing and stops to Hachijo-Jima.

27-05 20 ex. on the crossing and stops from Hachijo-Jima.

079 SLATY-BACKED GULL – larus schistisagus

21-05 3 immatures at Tokyo Bay, very bleached birds.

080 GREATER CRESTED TERN – sterna bergii

02-06 1 adult summer plumage flying by at a mud flat at Ishigaki-Jima.

The black head was complete, very nice views.

081 BLACK-NAPED TERN – *sterna sumatrana*

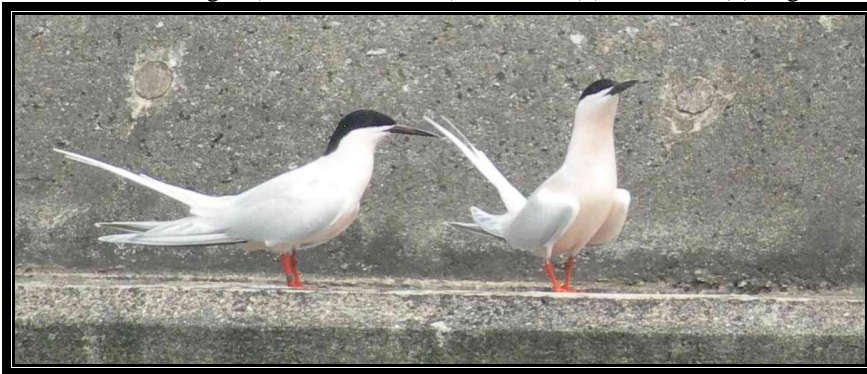
A total of 110 birds seen on Ishigaki-Jima and Okinawa in small colony's



083 ROSEATE TERN – *sterna dougallii*

(dougalsstern)

A total of 280 birds seen on two places at Okinawa. The birds just arrived and where displaying a lot. For birds where ringed (on Okinawa itself) with blue (2) and white (2) flags.



084 COMMON TERN – *sterna hirundo* ssp: *longipennis*

(visdief)

21-05 50 ex. at Tokyo Bay.

26-05 1 ex. on the ferry crossing.

31-05 3 ex. in a harbour at Amami.

Nice black bills.

085 LITTLE TERN – *sterna albifrons*

(dwergstern)

Seen on several times during the trip with the highest numbers in Tokyo Bay and at Ishigaki-Jima.

086 WHISKERED TERN – *chlidonias hybridus*

(witwangstern)

A total of 7 birds seen on the trip at four occasions.

087 WHITE-WINGED BLACK TERN – *chlidonias leucopterus*

(witvleugelstern)

22-05 4 ex. at Inbanuma Marsh.

31-05 1 ex. at Amami.

05-06 1 ex. in a flock of Roseate Terns at Okinawa.

088 JAPANESE WOOD PIGEON – *COLUMBA JANTHINA

26-05 5 ex. in the forests of Hachijo-Jima, often calling.

27-05 3 ex. in the forests of Hachijo-Jima, often calling.

Nice views of this glossy pigeon with more pink on the breast than seen in the books.

089 ORIENTAL TURTLE DOVE – *streptopelia orientalis* ssp: *orientalis*

A very common bird during the trip and seen on almost all days in reasonable numbers.

***090 EMERALD DOVE – CHALCOPHAPS INDICA**

02-06 1 ex. calling and coming in to the tape and giving “cracking views” at Ishigaki-Jima.

03-06 1 ex. at Ishigaki-Jima.

Very nice dove as in the books pictured.

***091 WHITE-BELLIED GREEN PIGEON – TRERON SIEBOLDII**

28-05 several birds heard during the day at Miike.

29-05 10 ex. seen quite well perched and in flight at Miike.

Nice maroon shoulders.

***092 WHISTLING GREEN PIGEON – TRERON FORMOSAE**

A total of 9 birds seen very well at the southern islands visited on the trip.

Big with a heavy belly and green shoulders.

093 NORTHERN HAWK-CUCKOO – *cuculus hyperythrus*

23-05 1 immature male(?) calling and flying over at Karuizawa.

24-05 the same bird seen.

The bird had a striped breast. Seen quite good and responding to the tape.

094 COMMON CUCKOO – *cuculus canorus*

(koekoek)

22-05 2 birds heard at Karuizawa.

24-05 1 bird heard at Karuizawa.

095 HORSFIELD’S CUCKOO – *cuculus horsfieldi*

28-05 1 ex. heard at Miike.

30-05 1 ex. heard at Miike.

04-05 1 ex. seen at Jamburu Forrest.

096 LESSER CUCKOO – *cuculus poliocephalus*

A total of 7 birds seen and heard at several southern locations, often in villages.

***097 RYUKYU SCOPS OWL – OTUS ELEGANS**

30-05 7 ex. seen and heard at Ichi-Baru .

01-06 many birds heard at Amami

02-06 1 seen at Ishigaki-Jima.

03-06 a few heard at Okinawa.

04-06 1 seen very well during the daytime in the scope at Okinawa.

A very nice scops owl, quite reddish and short eared. The call is a common sound in the southern islands during the night.

098 NORTHERN BOOBOOK – *ninox japonica*

30-05 several birds heard Ichi-Baru.

01-06 several birds heard at Ishigaki-Jima.

02-06 2 birds together on the telegraph wire coming to the tape, calling and giving superb views.

03-06 several birds heard around Ada.

099 GREY NIGHTJAR – *caprimulgus jotaka*

22-05 3 ex. heard and seen near some rice fields near Karuizawa.

100 FORK-TAILED SWIFT – *apus pacificus*

26-05 20 ex. on the islands from the ferry to Hachijo-Jima.

27-05 2 ex. from the same ferry on the way back.

101 HOUSE SWIFT – *apus nipalensis*

02-06 1 ex. seen quite far at Ishigaki-Jima

05-06 1 ex. seen very well at a river in the northern part of Okinawa.

***102 RUDDY KINGFISHER – HALCYON COROMANDA ssp: major +bangsi**

Seen and heard daily from Miike onwards. Two subspecies for me not really different, the southern island birds where darker. Cracking Kingfisher with the call of a Little Crebe but more as a whistle. This is a forest kingfisher often high in trees.

103 COMMON KINGFISHER – alcedo atthis

(ijsvogel)

A total of 5 birds seen and heard during the trip at different localities.

104 JAPANESE GREEN WOODPECKER – picus awokera

22-05 2 ex. at Karuizawa. Very nice views coming in to the tape.

30-05 1 ex. at the parking place of Miike.

***105 OKINAWA WOODPECKER – SAPHEOPIPO NOGUCHII**

04-06 6 ex., two families near Pipeline road at Okinawa.

05-06 5 ex. near Ada, also two family parties.

Seen very well. A big dark woodpecker. This must be an ancestor of White-backed. You can see the pattern of WB through the dark plumage (like the malarstripe). Very loud flight (wing flapping) and a squeaky call.

106 GREAT SPOTTED WOODPECKER – dendrocopos major

(grote bonte specht)

23-05 2 ex. at Karuizawa.

107 WHITE-BACKED WOODPECKER – dendrocopos leucotos ssp: namiyei + owstoni

(witrugspecht)

28-05 2 ex. at Miike. A pair, nice views.

31-05 4 ex. ssp: owstoni, at Amami. Seen very well and often (the birds followed us around). Big and dark with a dark back.

108 JAPANESE PYGMY WOODPECKER – dendrocopos kizuki

A total of 15 birds seen during the trip on the “main islands”. Often in pairs and found by there buzzing call.

109 FAIRY PITTA – pitta nympha

31-05 2 ex seen and heard at Miike. One bird gave very nice views calling and feeding on the forest floor.

Showing very well. We searched for three days for this species at Miike and they just arrived in the last hour of the stay...In flight very blue wings.





foto 's: Pete Morris

110 JAPANESE SKYLARK – *alauda (arvensis) japonica*

Common around Tokyo and the visited area's, often in song.

111 BARN SWALLOW – *hirundo rustica*

(boerenzwaluw)

Common throughout the trip.

112 PACIFIC SWALLOW – *HIRUNDO TAHITICA

30-05 10 ex. at the airfield of Amami.

Seen daily from 02-06 onwards on all the southern islands.

Like a cross between a Barn Swallow and a Crack Martin.

113 RED-RUMPED SWALLOW – *hirundo daurica*

(roodstuitzwaluw)

03-06 1 ex. in a flock of Barn Swallows sitting on a wire at Hentona.

114 ASIAN HOUSE MARTIN – *delichon dasypus*

(huiszwaluw)

Commonly seen the whole day in small colonies at Karuizawa.

More dull on the underparts with blackish underwing coverts coverts.

115 OLIVE BACKED PIPIT – *anthus hodgsoni*

(siberische boompieper)

24-05 at mount Fugi.

116 BLACK-BACKED WAGTAIL – *motacilla alba ssp: lugens*

Common on the main islands of Japan, but missing in the south.

117 JAPANESE WAGTAIL – *motacilla grandis*

22-05 1 male sitting on a wire near some rice fields near Karuizawa.

23-05 2 ex. at Chikume River.

118 GREY WAGTAIL – *motacilla cinerea*

(grote gele kwikstaart)

A total of 8 birds seen at some suitable localities on the main islands.

119 ASHY MINIVET – *pericrocotus divaricatus*

A total of 15 birds seen at Karuizawa, some very close views.

120 RYUKYU MINIVET – *pericrocotus tegimae*

Seen daily with up to 10 birds (29-05) a day on the southern islands. Very good views and all the different features with 119 studied.

121 CHINESE BULBUL – *pycnonotus sinensis*

Seen daily with up to 7 birds at Ishigaki-Jima and Okinawa.

122 BROWN-EARED BULBUL – *hypsipetes amaurotis*

Common during the whole trip and seen at all visited locations with in the south longer tailed smaller birds than on the mail islands.

123 BROWN DIPPER – *cinclus pallasii*

23-05 1 ex. at Chikume River.

124 WINTER WREN – *troglodytes troglodytes* ssp: *fumigatus* + *mosukei*

(winterkoning)

A total of 8 birds seen at Karuizawa and on Hachijo-Jima. The birds looked planer darker brown then “our” birds. No real difference between the seen subspecies was noted.

125 JAPANESE ACCENTOR – *PRUNELLA RUBIDA

24-05 1 bird singing and showing well at the highest point of Mount Fugi reachable by car near the parking lot. Very brown on the head and a totally different song.



126 JAPANESE ROBIN – *erithacus akahige* ssp: *tanensis*

26-05 5 ex. seen on Hachijo-Jima.

27-05 1 ex. seen on Hachijo-Jima.

The birds showed well all without the dark line bordering the red on the breast.

127 RYUKYU ROBIN – *ERITHACUS KOMANDORI* ssp: *komadori* + *namiyei

31-05 ssp: komadori; 1 male at Amami

01-06 ssp: komadori; 2 birds at Amami.

Ssp; namiyei; A total of 14 birds seen on Okinawa, many females feeding along the road side.

Te two forms are quite different, the Amami one with black on the flanks and much more black on the forehead.

The Okinawa one missing this and is less contrastly and far more common.



Amami



Okinawa

Foto's: Pete Morris

128 SIBERIAN BLUE ROBIN – *luscinia cyane*

23-05 2 birds, of which one male seen very well feeding on the ground at Karuizawa.

24-05 several heard at Karuizawa.

129 NORTHERN RED-FALNKED BLUETAIL – *tarsiger cyanurus*

(blauwstaart)

24-07 7 ex. off which one nice male at mount Fugi.

130 SIBERIAN STONECHAT – *saxicola maura*

(aziatische roodborstapuit)

22-05 5 ex. near Karuizawa at some rice fields.

131 BLUE ROCK-THRUSH – *monticola solitarius* ssp: *philippensis*

(blauwe rotslijster)

Seen daily from the 26th onwards with up to 3 birds on a day.

132 WHITE'S THRUSH – *zoothera aurea*

(goudlijster)

26-05 1 ex. heard singing on Hachijo-Jima.

27-05 1 ex. seen on the road on Hachijo-Jima.

30-05 2 ex. at a nest sitting together at the nest in a treevork at Miike. Cracking scope views.



foto: Pete Morris

133 AMAMI THRUSH – *ZOOTHERA MAJOR

31-05 2 ex. singing at Amami. Heard very well, not seen very well. The song is totally different from 132 (Songthrush like instead of the whistle of 132). One bird came in to the tape and was seen in flight and looked like 132 but the views where brief.

134 JAPANESE THRUSH – *turdus cardis*

23-05 5 ex. all males in song at Karuizawa.

24-05 2 ex. a pair at Karuizawa.

Very nice thrush, like a shy blackbird with white black speckled underparts. Often high in trees.

135 BROWN THRUSH – *turdus chrysolaus*

24-05 4 ex. at mount Fugi.

25-05 5 ex. at mount Fugi

The common thrush at the mountain often on the ground an besides the road.

136 IZU THRUSH – *TURDUS CELAENOPS* ssp: *yakushimensis

26-05 4 ex. with a pair at a nest on Hachijo-Jima.

27-05 3 ex. on Hachijo-Jima.

A nice thrush like a bright 135.

137 ASIAN STUBTAIL WARBLER – *urosphena squameiceps*

23-05 1 seen very well singing for a long time in the scope at Karuizawa.

Heard every day at Miike but did not put in effort to see them.

138 JAPANESE BUSH WARBLER – *cettia diphone*

Common throughout the whole trip, more common on the main islands.

139 ZITTING CISTICOLA – *cisticola juncidis* ssp: *brunniceps*

A total of 26 birds seen on several wetland locations throughout the trip. The song of this subspecies is totally different (two syllables) and the birds have a dark crown. This must be a different species.....

140 JAPANESE SWAMP WARBLER – locustella/megalurus(?) pryeri ssp: pryeri

21-05 25 ex. singing in the reed beds around Omyjawa Gowa.

Very nice views close by and often in song flight. Quite rufous on the upperparts something often missing in drawings of this species.

141 BLACK-BROWED REED WARBLER – acrocephalus bistrigiceps

22-05 2 ex. in a reed bed at Karuizawa near some rice fields.

142 ORIENTAL REED WARBLER – acrocephalus orientalis

21-05 40 ex. seen in the reed beds around Omyjawa Gowa.

22-05 common at Inbanuma Marsh.

25-05 3 ex. at Karuizawa.

143 EASTERN CROWNED WARBLER – phylloscopus coronatus

23-05 1 seen well, singing at Karuizawa.

***144 IJIMA WARBLER – PHYLLOSCOPUS IJIMAE**

26-05 common on Hachijo-Jima.

27-05 common on Hachijo-Jima.

Very like eastern crowned warbler but with a totally different song and less colourful. with a less marked supercilium, all orange under mandible and eyering. Often flycatcher like behaviour.

145 ARCTIC WARBLER – phylloscopus borealis

(noordse boszanger)

Common at Mount Fugi, with birds heard all the time singing.

146 BLUE-AND-WHITE FLYCATCHER – cyanoptila cyanomelana

22-05 1 male (cracking scope views) at Karuizawa.

23-05 4 seen and heard at Karuizawa.

24-05 1 seen at Karuizawa.

Very nice bird and typical song.

147 DARK SIDED FLYCATCHER – muscicapa siberica

24-05 2 ex. at Mount Fugi, a pair.

148 ASIAN BROW FLYCATCHER – muscicapa dauurica

23-05 2 ex. singing at Karuizawa. Scope views.

149 NARCISSUS FLYCATCHER – ficedula narcissina

23-05 4 ex. at Karuizawa.

24-05 2 ex. at Karuizawa.

30-05 3 ex. Miike.

---- RYUKYU FLYCATCHER – ficedula (narcissina) owstoni

31-05 7 ex. of which several males (one very bright) at Amami.

01-06 1 male at Amami.

03-06 1 male at Ishigaki-Jima.

This form is still treated as a subspecies but looks quite different with a different call and song. Males are a very dull form of 149, with no black on the backs (more greenish) but at least one bright male was seen much like 149.

150 JAPANESE PARADISE FLYCATCHER – terpsiphone atrocaudata

28-05 4 ex. at Miike, seen very well, both pairs.

29-05 heard at Miike, did not try to see them.

31-05 2 ex. seen well at Amami.

---- HWAMEI – garrulax canorus

24-05 2 ex. seen from a bridge near Diamond Dam. This species is introduced.

151 LONG-TAILED TIT – *aegithalos caudatus* ssp: *trivirgatus* + *kiusiuensis*
(staartmees)

23-05 2 ex. at Karuizawa.

29-05 4 ex. at Miike.

No differences noted between the subspecies.

152 WILLOW TIT – *parus montanus*
(glanskop)

A total of 5 birds seen at Karuizawa.

153 VARIED TIT – *parus varius* ssp: *varius* + *namiyei* + *owstoni* + *amamii*

Seen throughout the trip in various subspecies with a maximum of 10 birds on a day (24-05). The subspecies *owstoni* on Hachijo-Jima (3 birds seen very well) was very distinct being deep rufous on the normal yellow white face.

154 COAL TIT – *parus ater* ssp: *insularis*
(zwarte mees)

23-05 1 ex. at Karuizawa.

24-05 2 ex. at Karuizawa.

155 JAPANESE (GREAT) TIT – *parus* (major) minor (group)

Common on most visited sites on the main islands and Amami and Okinawa. No real differences noted between the seen taxa.

----- ISHIGAKI-JIMA TIT – *parus* (major) *nigriloris*

A total of 5 birds seen well on Ishigaki-Jima. Very different from 155, longer tailed, very dark with a grey wash on the flanks and isolated small white cheeks in a black face. The calls were also very different, this must be a possible split..

156 EURASIAN NUTHATCH – *sitta europaea* ssp: *amurensis* + *roseilia*
(boomklever)

ssp: *amurensis*; A total of 8 seen at Karuizawa.

ssp: *roseilia*; A total of 4 birds seen at Miike.

Underparts colour different between the two subspecies, not very exiting.

157 JAPANESE WHITE-EYE – *zosterops japonicus*

Common during the whole trip most common in the southern parts/islands of Japan.

158 BULL-HEADED SHRIKE – *lanius bucephalus*

A total of 9 birds seen on the main islands and also on Hachijo-Jima.

159 EURASIAN JAY – *garrulus glandarius* ssp: *japonicus*
(vlaamse gaai)

A total of 8 birds seen at Karuizawa.

160 LIDTH JAY – *GARRULUS LIDTHI

31-05 8 ex. in small groups at Amami.

01-06 4 ex. at Amami.

A huge longtailed jay, very noisy but surprisingly difficult to have close views, but eventually seen very well.

161 AZURE-WINGED MAGPIE – *cyanopica cyanus* ssp: *japonica*

21-05 2 ex. at Tokyo Bay.

162 SPOTTED NUTCRACKER – *nucifraga caryocatactes*
(notenkraker)

24-05 2 ex. seen close by at mount Fugi.

163 ORIENTAL CROW – *corvus* (corone) *orientalis*

Seen daily in numbers up to 15+ on the main islands but not on the southern islands.

164 LARGE-BILLED CROW – *corvus macrorhynchos*

Seen almost daily, on the main islands in lower numbers than 163, but it was the only large corvid on the southern islands.

165 CHESNUT-CHEEKED STARLING – *sturnus phillippensis*

22-05 2 ex., distant birds near a nest site on a roof along the way.

23-05 5 ex. sitting on the wire, close views, along the way.

166 WHITE-CHEEKED STARLING – *sturnus cineraceus*

Quite common on the main islands, the most common around Tokyo. Missing on the southern islands.

167 EURASIAN TREE SPARROW – *passer montanus*

(ringmus)

Common throughout the trip.

----- SCALY BREASTED MUNIA – *lonchura punctulata*

04-06 7 ex. in a small flock in the rice fields at near Hentona. Introduced.

168 GREY-CAPPED GREENFINCH – *carduelis sinica*

A total of 27 birds seen at Karuizawa.

A total of 4 birds seen at Miike.

169 JAPANESE GROSBEAK – *eophona personata*

A total of 12 birds seen at Karuizawa, mostly close views at the feeder from the window.

A total of 3 birds seen at Miike.

170 BLACK-FACED BUNTING - *emberiza spodocephala* ssp: *personata*

(maskergors)

23-05 1 male singing at Karuizawa.

24-05 1 male singing at Karuizawa.

This is the yellow subspecies with yellow underparts with black spots on the breast and a black patch at the base of the underbill.

171 JAPANESE YELLOW BUNTING – *EMBERIZA SULPHURATA

22-05 2 ex. a pair at Karuizawa. The male was singing.

23-05 1 ex. at Karuizawa, a different male.

24-05 1 ex. the same as on 23-05.

Very nice bunting, much more greenish yellow than yellow as expected. It loves clearings and small streams.



172 MEADOW BUNTING – *emberiza cioides*

(weidegors)

A total of 19 birds seen on the main islands and Hachijo-Jima, mainly singing males but also a pair at a nest.

173 CHESNUT-EARED BUNTING – *emberiza fucata*

22-05 2 ex. at Inbanuma Marsh.

174 JAPANESE REED BUNTING – *emberiza vessoensis*

21-05 10 ex., mostly singing males around the reed beds around Omyjawa Gowa. Nice breeding plumaged birds.

----- :: -----

THE HAIRY LIST

- JAPANESE HAIR – *lepus brachyurus* – 1 seen on 24-05.
- JAPANESE SQUIRREL - *sciurus lis* – 1 seen on 24-05.
- JAPANESE GIANT FLYING SQUIRREL – *petaurista leucogenys* – 1 seen sleeping in a nest box on camera on 23-05
- RYUKYU FLYING FOX – *pteropus dasymallus* – 11 seen on 02+03-06
- SIKA DEER – *cervus nippon* – 6 seen on 24-05.
- JAPANESE WEASEL – *mustela itatsi* - 1 seen on 24-05 and 1 seen on 27-05
- EURASIAN BADGER – *meles meles* - 1 seen on 29-05
- JAPANESE SEROW – 3 seen on 30-05